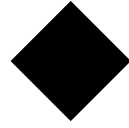




TANTALUS

PRODUCT CATALOGUE
♦ VOLUME 4 ♦



TANTALUS

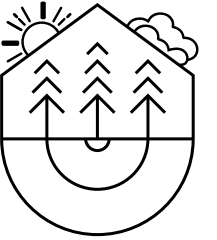
SMALL-BATCH SUSTAINABLE CANNABIS, CRAFTED IN B.C.

Tantalus Labs is focused on producing exceptional cannabis with sustainable cultivation methods.





To cultivate world-class cannabis, Tantalus Labs spent 4 years designing and building a unique greenhouse in the Fraser Valley near Vancouver, BC.



We call it SunLab¹.



HOW WE GROW

RAINWATER

FULL SPECTRUM LIGHT

ELITE GENETICS + STRAIN SELECTION

Selecting a cannabis phenotype for cultivation is a meticulous 18 month process at our growing facility SunLab¹.

Our team of experts look for the best physical expressions of a strain to narrow down the selection. Traits like potency, aroma, bud structure and density, as well as plant resiliency and health are isolated throughout four rounds of grow cycles. We select cuttings from the best half of each round and use potency testing to help determine the best phenotypes to bring to market.

PETROCAN



6.

5.



PRE-ROLLS

Quality Ground Flower,
Conveniently Pre-rolled.

Tantalus Labs pre-rolls
are available in the same
exclusive strains as our
whole flower.



WHOLE BUD, PRE-ROLLED FOR YOU

Cannabis plants naturally
produce buds of varying
sizes. For a bud to make it
into our flower packaging, it
needs to be of a certain size.
Smaller buds have the same
cannabinoid and terpene
profiles, but are just a smaller
package. We use these
smaller buds as input to our
pre-roll products.

OUR PRODUCTS

Unique genetics are thoughtfully curated from our seed bank of over 200 strains, along with in-house breeding, we're on the hunt to cultivate the most sought after genetics available today.

SUNSET SHERBERT

PACIFIC OG



PACIFIC OG

PACIFIC OG IS A SATIVA DOMINANT HYBRID, A TANTALUS CURATION OF GOJI OG, BRED FROM NEPALI OG AND SNOW LOTUS.

Nepali OG, aka Nepali Kush, is a long-lineage classic close to Tahoe OG that brings conical-shaped buds and earthy notes of an OG aroma, while Snow Lotus lays an undercurrent of black cherry and subtle hints of licorice.



THC

20-27%

CBD

0-1%

LINEAGE:

**NEPALI OG
X
SNOW LOTUS**

TERPENES:

**MYRCENE
LINALOOL
LIMONENE**

TASTING NOTES:

**BLACK CHERRY
LICORICE**

CLASSIFICATION:

SATIVA

L.A. KUSH CAKE



L.A. KUSH CAKE

LA KUSH CAKE IS A CAKED OUT HYBRID STRAIN BRED FROM COMBINING KUSH MINTS AND WEDDING CAKE.

The Tantalus curation of LA Kush Cake was selected from a cake leaning phenotype during a larger than average seed hunt. It carries a classic OG taste of gas and diesel, along with subtle sour notes. The flower is dense green with hints of purple, and true to its name, large nugs are caked up with frost.



THC

19-25%

CBD

0-1%

LINEAGE:

**WEDDING CAKE
X
KUSH MINTS**

TERPENES:

**CARYOPHYLLENE
LIMONENE
NEROLIDOL**

TASTING NOTES:

**CREAM
GAS**

CLASSIFICATION:

HYBRID

MORE COWBELL



MORE COWBELL

MORE COWBELL IS A HYBRID CROSS OF GSC AND 88/G13 HASH PLANT.

More Cowbell delivers a balance between the traits of both hash plant and GSC. This cultivar provides large dense buds with a pointed silhouette, and contains above average resin content to provide a hashy, cookie flavour with undertones of gas.



THC

23-29%

CBD

0-1%

LINEAGE:

**GSC
X
'88 G13**

TERPENES:

**CARYOPHYLLENE
LIMONENE
MYRCENE**

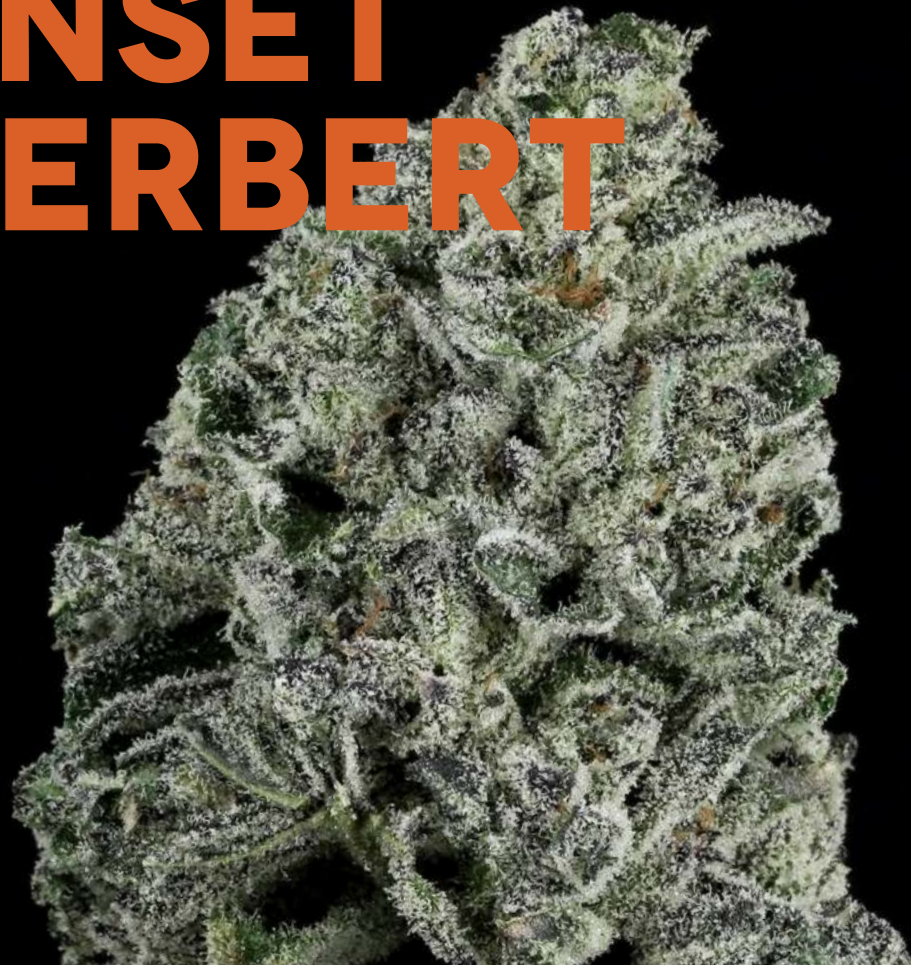
TASTING NOTES:

**COOKIE
TART
HASH**

CLASSIFICATION:

HYBRID

SUNSET SHERBERT



SUNSET SHERBERT

SUNSET SHERBERT IS A POTENT INDICA STRAIN, BRED FROM CROSSING THE POPULAR GSC (GIRL SCOUT COOKIES) AND PINK PANTIES.

Tantalus' Sunset Sherbert is unique because it's a backcross (BX1). It was crossed and then bred back with the original Sunset Sherbert strain, to achieve a further stabilized expression of the desired traits. These traits include a sweet sugar aroma mixed with berries and gas, along with dense frosted nugs in a rainbow of purple, green, and orange colour.



THC

20-26%

CBD

0-1%

LINEAGE:

**GSC
X
PINK PANTIES**

TERPENES:

**CARYOPHYLLENE
CEDERENE
LIMONENE**

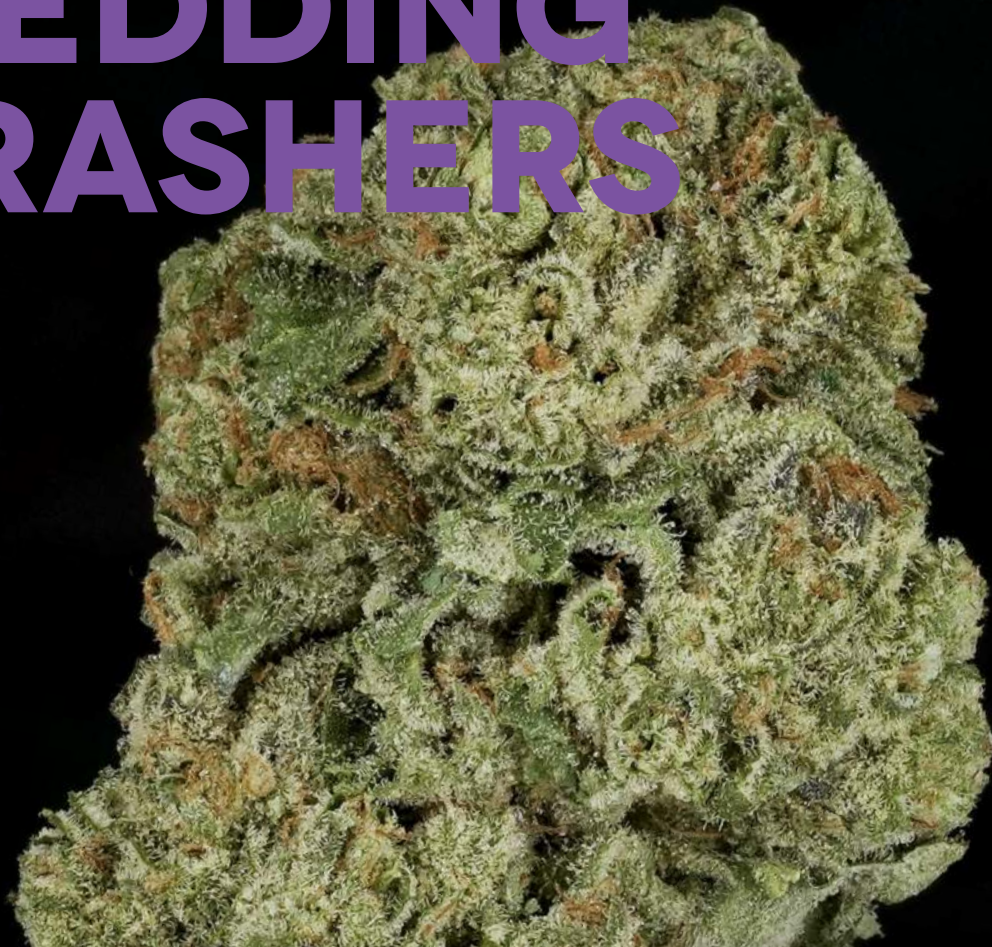
TASTING NOTES:

**SWEET
GRAPE
GAS**

CLASSIFICATION:

INDICA-HYBRID

WEDDING CRASHERS



WEDDING CRASHERS

WEDDING CRASHERS IS A POTENT, INDICA-DOMINANT WEDDING CAKE CROSS AND A STAPLE IN THE TREND OF DESSERT STRAINS.

The flower is predominantly dark green with often purple hues with a smoke that is smooth with hints of floral and forest.



THC

20-26%

CBD

0-1%

LINEAGE:

**INDICA LEANING
WEDDING CAKE
CROSS**

TERPENES:

**CARYOPHYLLENE
LIMONENE
GERMACRENE**

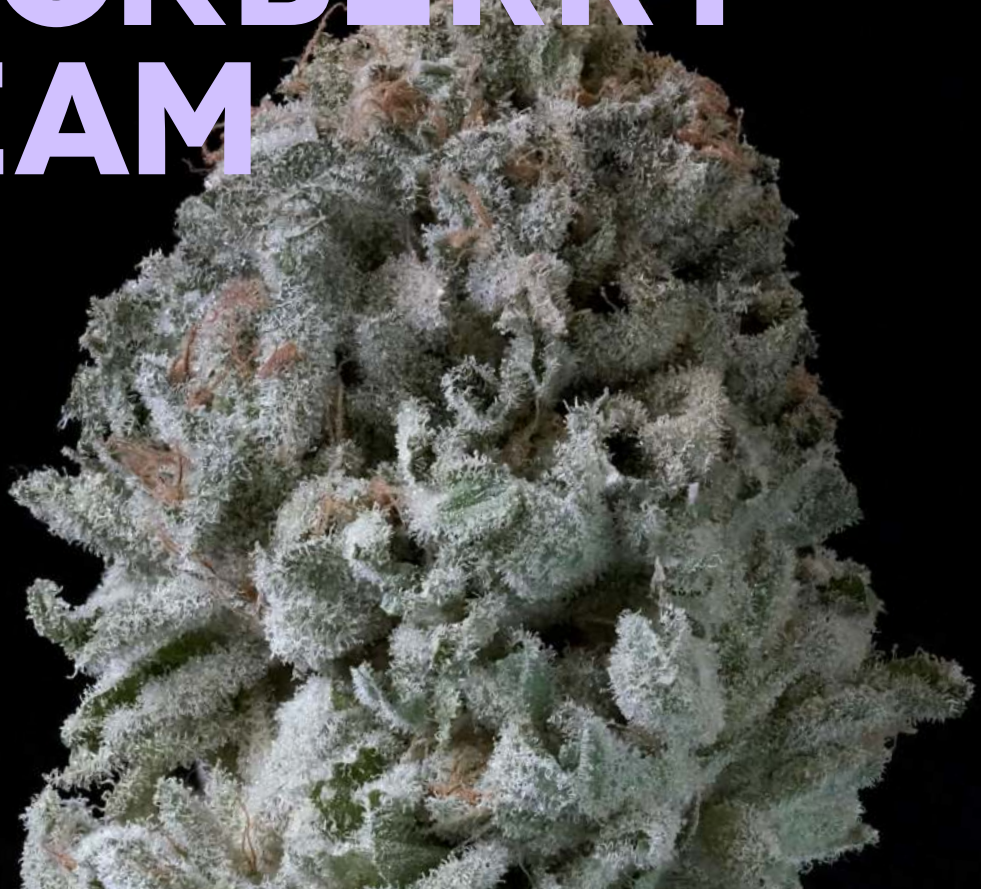
TASTING NOTES:

**FUEL
CITRUS
HERBAL**

CLASSIFICATION:

INDICA

BLACKBERRY CREAM



BLACKBERRY CREAM

SWEET AND SMOOTH, BLACKBERRY CREAM IS A STRONG INDICA FROM A CELEBRATED LINEAGE.

Blackberry Kush crossed with Cookies and Cream give this cultivar its silky, berry scent with a hint of spicy hash. This plant grows small and bushy reminiscent of its Kush heritage, producing dark green buds that are notoriously resinous. Usually a top-performing cultivar for hash makers, Blackberry Cream is known for its trichome coverage and decadent aromas.



THC

21-25%

CBD

0-1%

LINEAGE:

**BLACKBERRY KUSH
X
COOKIES AND CERAM**

TERPENES:

**MYRCENE
LIMONENE
CARYOPHYLENE**

TASTING NOTES:

**SWEET
CREAM
BERRY**

CLASSIFICATION:

INDICA-HYBRID

BLACK DIAMOND



BLACK DIAMOND

BLACK DIAMOND IS A NEARLY PURE INDICA KNOWN FOR PRODUCING HIGHLY POTENT FLOWERS WITH DENSE CONICAL SHAPED BUDS.

The genetic expression leans towards its Triangle Kush parent, which can be traced back to the legendary breeders of the Florida Everglades. The other parent is '88 G13 Hash Plant, which gives Black Diamond its frosted forest appearance, powerful Kush aroma and subtle vanilla overtones.



THC

21-27%

CBD

0-1%

LINEAGE:

**TRIANGLE KUSH
X
'88 G13 HASH PLANT**

TERPENES:

**NEROLIDOL
MERCENE
CARYOPHYLENE**

TASTING NOTES:

**GAS
HASH
VANILLA**

CLASSIFICATION:

INDICA-HYBRID

COASTAL S.A.G.E



COASTAL S.A.G.E

COASTAL S.A.G.E FROM TANTALUS LABS IS A SATIVA DOMINANT HYBRID AND A CROSS BETWEEN ZETA (OG KUSH X S.A.G.E.) AND SOUR DIESEL.

Coastal S.A.G.E produces large resinous buds with hues of earth green and gold. With terpinolene as the dominant terpene, this cultivar expresses lush flavours of lime and fuel. Zesty, potent, and powerful, Coastal S.A.G.E is a unique offering for sativa-hybrid lovers.



THC

20-26%

CBD

0-1%

LINEAGE:

**ZETA
X
SOUR DIESEL**

TERPENES:

**TERPINOLENE
CARYOPHYLENE
LIMONENE**

TASTING NOTES:

**LIME
FUEL
SPICE**

CLASSIFICATION:

SATIVA-HYBRID

CANNATONIC



CANNATONIC

CBD SPECIFIC GENETICS FOR THOSE SEEKING BENEFITS OF HIGH CBD WITH LOW TO NO PSYCHOACTIVE EFFECTS.

Cannatonic is the result of crossbreeding Reina Madre with New York City Diesel (NYCD), which provides varied phenotypes ranging from high THC to high CBD. Tantalus selected our Cannatonic to target a 1:18 cannabinoid profile, reflecting the desired ratio for CBD enthusiasts. Expect this 50/50 indica sativa cross to have dense resin coated buds showcasing notes of citrus and pine.



THC

0-1%

CBD

10-18%

LINEAGE:

**MK ULTRA
X
G13 HAZE**

TERPENES:

**BISABOLOL
CARYOPHYELLENE
GUAJOL**

TASTING NOTES:

**CITRUS
PINE**

CLASSIFICATION:

CBD-SATIVA

HARLEQUIN



ONLY AVAILABLE IN: ONLY AVAILABLE IN:
PRE-ROLLS
3 X .5G

HARLEQUIN

THE GENETIC MAKEUP OF THIS PLANT IS A PATCHWORK OF 1970'S COLUMBIAN, THAI, AND NEPALI INFLUENCES WHICH CREATES A SATIVA LEANING PLANT.

Tantalus selected from the diverse genetic heritage and expression of this plant, to provide a balanced THC and CBD profile. Our Harlequin combines the original Harlequin strain, crossed with The Ox, resulting in a 1:2 THC/CBD, go anywhere strain.



THC

2-6%

CBD

5-11%

LINEAGE:

**COLUMBIAN GOLD
X
NEPALI LANDRACE**

TERPENES:

**CARYOPHYLLENE
PINENE
BISABOLOL**

TASTING NOTES:

**CHERRY
CITRUS
HONEY**

CLASSIFICATION:

CBD-SATIVA

BLUE DREAM



BLUE DREAM

THIS FLOWER IS SATIVA LEANING, WITH SWEET BLUEBERRY FROSTING, SUITABLE FOR EUPHORIC AND CALMING DAYTIME USE.

The Tantalus Labs Blue Dream was selected from traditional genetics and crossed to increase the bud structure and frost while maintaining the expected fruitful taste. First developed in California, it has become a West Coast staple since its introduction.



THC

16-20%

CBD

0-1%

LINEAGE:

**BLUEBERRY
X
OG KUSH**

TERPENES:

**MYRCENE
PINENE
CARYOPHYLLENE**

TASTING NOTES:

**BERRY
SWEET
SUGAR**

CLASSIFICATION:

SATIVA

KUSH PUNCH



KUSH PUNCH

KUSH PUNCH PRE-ROLLS BRING A POTENT SMOKE WITH FLAVOURS OF SMOOTH VANILLA AND SWEET FRUIT.

Made from some of our highest-THC cultivars, we use whole-buds that have been carefully selected for flavour and potency. Strong THC potency paired with sustainably sourced packaging provides an ideal 7 pack of pre-rolls to-go.



THC

18-24%

CBD

0-1%

LINEAGE:

HIGH THC CULTIVARS

TERPENES:

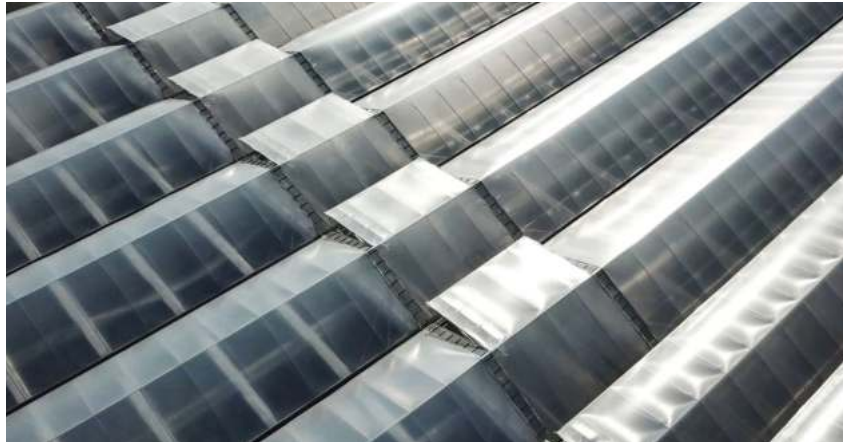
VARIOUS INPUTS

TASTING NOTES:

SWEET FRUITY HERBAL

CLASSIFICATION:

INDICA-HYBRID





SLURRI CRASHER







@TANTALUS_LABS
@TEAMTANTALUS



TANTALUSLABS.COM